

# OSADA Letter

Safety and Comfort Supply for the customer using OSADA SMILY Z



# Safety and Comfort Supply

---

Dental chair has consumable parts with each longevity.

Our Safety and Comfort Supply will maintain smooth/troubleless condition of units in the customers' clinic or hospital.



# About your OSADA SMILY Z

---

OSADA SMILY Z performed and received patronage in many countries until discontinued in 2017.

In order to use SMILY Z safely for a long time which has been performing in your clinics and hospitals for many years, we have posted some checkpoints at here.

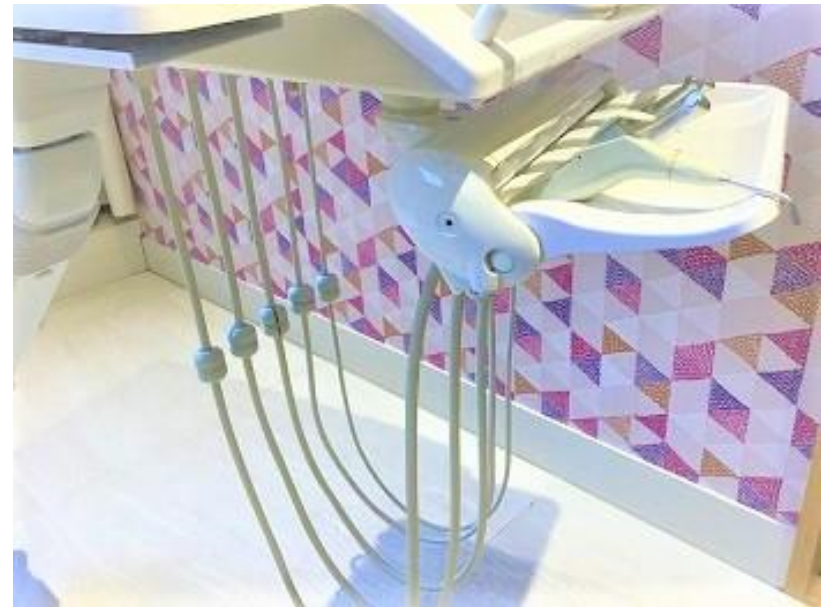
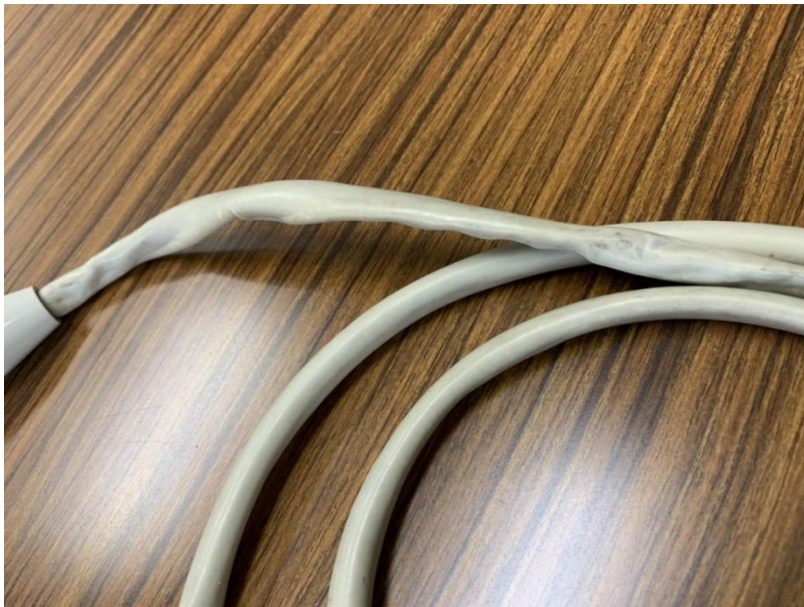
Let's check together if your SMILY Z is applicable.



# Case1 | Instrument hose

---

If you use it for a long time, the hose will darken, harden and twisted, making it unattractive and difficult to operate.



# Case2 | Suction Hose

---

The longer you use the vacuum hose, the harder it will become. Don't you feel that your wrists get tired after a long medical examination?



# Case3 | Backrest & Seat

---

Is it getting discoloration due to color transfer from jeans or has the sheet been discolored or hardened due to anti-infectious agents?

Reupholster your leather for a new look.



# Case4 | Turbine Handpiece

---

Even the turbine, which rotates 340,000 times per second, will suddenly drop in speed, and in the worst case, it may stop during cutting.

Abnormal noise during rotation gives patients a sense of uneasiness.

THE PERFORMANCE OF  
HI SPEED HANDPIECE



# Case5 | Sensor cup filler filter

---

If you notice the filter that you don't usually see, garbage will be piling up.

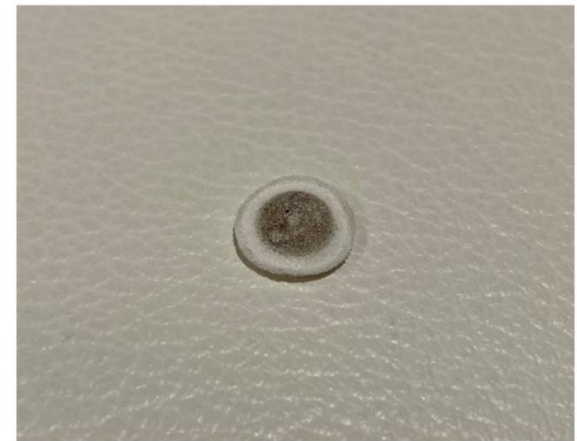
With regular replacement, sanitary water is always available.



Before



Need to change





# Case6 | Halogen Lamp

---

**Suddenly, the operating light stopped working. You've never had that experience?**

**By keeping the lamp in stock, you can give the treatment continuously and safety.**





**Imagine your SMILY Z suddenly going out of service in treatment.**

**In order to continue to provide safe and secure treatment, regular maintenance and inspection of equipment are important.**



**OSADA**

**Refine for the future**